

4U

month JANUARY

project LOVELY LITTLE OWL

20
10



SEW LOVELY MONTHLY MAKE

SUPPLIES

The sky's the limit as far as supplies go for this project. I personally, like to use denim or corduroy for my main fabric and some fun vintage pattern for my decorative touches (or Amy Butler . Heather Bailey since they're some personal favourites!). Really, whatever scraps you have lying around.

MATERIALS

- main body fabric (FABRIC A) - scraps measuring 10" x 5 1/4"
- decorative tummy fabric (FABRIC B) - scraps measuring 4 1/2" x 5 1/4"
- coordinating spool of thread
- felt - 2 complimentary colours (FABRIC C + D)
- felt colour for beak (FABRIC E)
- Polyfill stuffing (my favourite is ecofill luxury fibre fill)

If making a bed warmer:

- unscented, uncooked white rice
- lavender oil or another scent of your choice (optional)

ADDITIONAL FILLERS:

- flax seed
- barley
- buckwheat hulls
- groat oats

TOOLS + STUFF

- sewing machine
- sewing needle
- sharp scissors
- rotary cutter (optional)
- chopstick
- iron
- funnel (optional)
- fabric pins
- fabric pen or pencil



SEAM ALLOWANCE

1/4" UNLESS NOTED OTHERWISE

STEP ONE CUT YOUR FABRIC PIECES

FABRIC A - cut one of each
7" x 5 1/4" rectangle
3" x 5 1/4" rectangle

FABRIC B - cut one
4 1/2" x 5 1/4" rectangle

FABRIC C - cut one
5" Diameter Circle (PAGE 6)

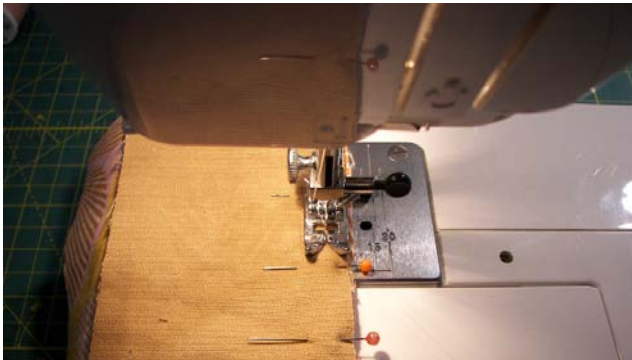
FABRIC D - cut two of each
1 3/4" Diameter Circle (PAGE 6)

FABRIC E - cut one
small triangle with rounded corners (PAGE 6)



STEP TWO ASSEMBLE OWL FRONT

Line up the long edges (5 1/4") of **FABRIC B** with the small rectangle cut from **FABRIC A** wrong sides together. Pin and sew. Press seams flat. Cut in half the largest felt circle (**FABRIC C**) and pin straight edge along raw edge of body starting 1/2" up on both sides.



STEP THREE ASSEMBLE FRONT TO BACK OF OWL

With the owl front still facing right side up on surface, place the large rectangle of **FABRIC A** on top (right sides together) aligning all four corners. Pin and sew all the way around making sure to catch the wings on either side. Leave a 2" opening on top of the head for turning. Clip corners and turn right side out (use a chopstick to help poke out corners and get a nice point). Press.

STEP FOUR STUFF + CLOSE TOP

If using Polyfill, stuff the two bottom corners first making sure they are nice and firm. **HINT: a chopstick works well to help get the stuffing snugly into the corners.** Continue stuffing the owl quite firmly and working into the top corners as well. To help create a dip in the centre of the head, make sure both top corners are stuffed firmly to help with the appearance of 'horns'. Slightly decrease the stuffing in the centre (but not too much...you don't want the poor little guy to look like he fell out of his tree). Blind stitch the opening closed. (I like to make a couple stitches, knot, add bits of fill and repeat until I completely close the hole). Knot and hide thread inside.

SCENTED RICE STUFFING INSTRUCTIONS

If using scented rice, first mix rice with desired scent in a large bowl. Place funnel inside opening and fill to top of head just enough that you can still close hole and blind stitch closed (do not fill top corners - leaving them empty allows them to stand up better). Once sewn closed, lift by the two top corner and gently shake rice into place.

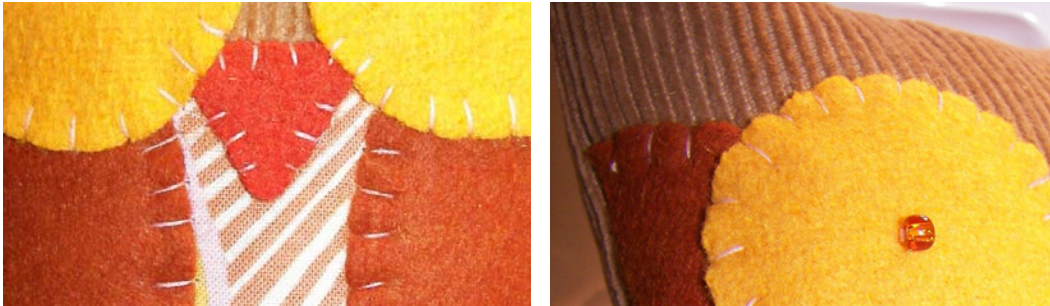
STEP FIVE HAND SEW WINGS AND FACE

Smooth each wing into centre of owl and pin. Whip stitch wings into place - I like to use thread that stands out from the felt in order to draw attention to the hand sewn details. Centre beak (**FABRIC E**) along line where **FABRIC A + B** join - whip stitch in place. Place eyes (**FABRIC D**) on either side of beak slightly overlapping the beak and



whip stitch in place. Add buttons* to eyes or beads or embroider the eye's centre. If you are feeling really fancy and want to beautify your little owl some more, why not try hand stitching some felted flowers on the side of her head or add some pretty hearts, stars, flowers you name it, to the wings.

*please note: if making the microwavable version, make sure that you choose eyes that do not have any metal on them (don't want to be responsible for blowing up your microwave!).



Optional: If you would like your owl to look sleepy, then cut one more circle of the same diameter as the eyes and cut in half to make eyelids. Attach buttons making sure that when eyelids are attached, the button will be half covered. Whip stitch eyelid in place.

If making the bed warmer version, then heat in microwave for 30 second intervals until you reach desired heat. The scented oil in the rice will come to life while your little one snuggles to their hearts content.

CONGRATULATIONS - ENJOY YOUR LOVELY LITTLE OWL!!

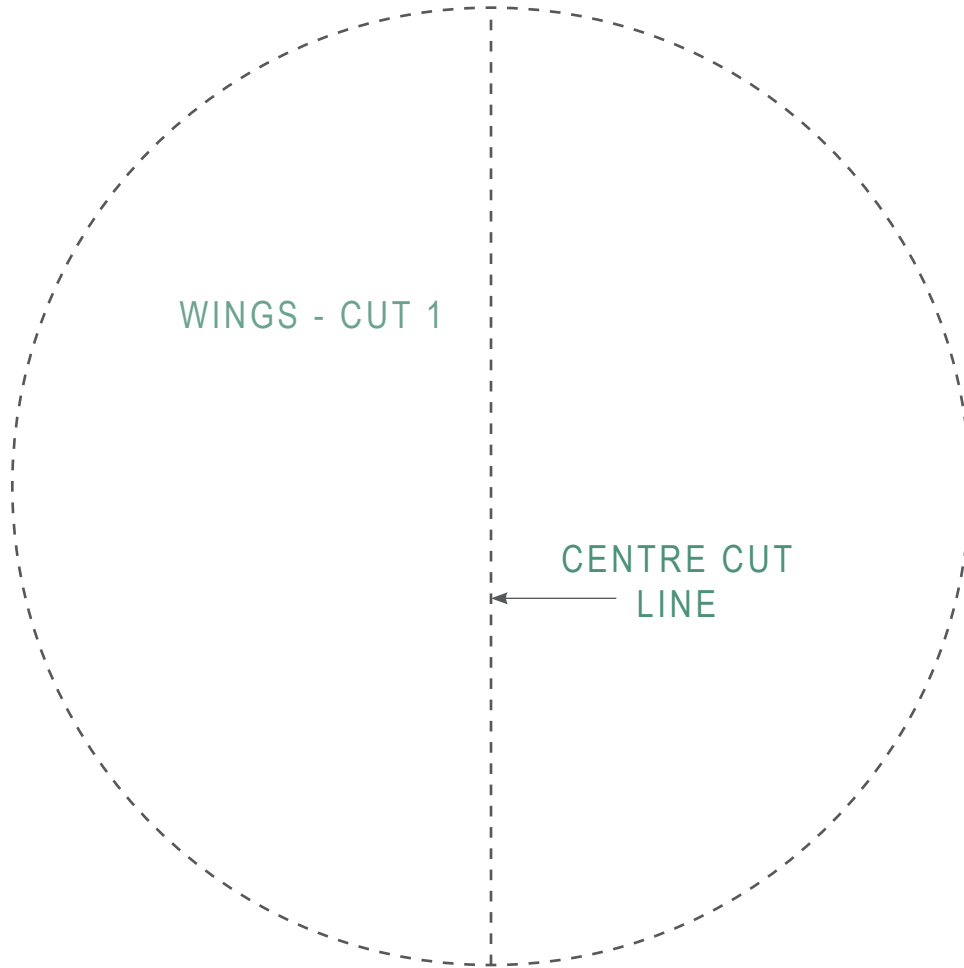


4U

month JANUARY

project LOVELY LITTLE OWL

20
10



4U	month	JANUARY	20 10
	project	LOVELY LITTLE OWL	

This tutorial was created in January 2010 by Kirsten Degner of Sew Lovely; a division of Studio947. This document cannot be reproduced without permission of the author.

Sew Lovely Hand Made

blog: www.sewlovelyhandmade.blogspot.com

e-mail: sewlovely@studio947.com

Studio947

website: www.studio947.com

blog: www.studio947.blogspot.com

e-mail: kirsten@studio947.com

Don't forget to display your finished Lovely Little Owl on the Sew Lovely Monthly Make flickr group at <http://www.flickr.com/groups/1321518@N20/> Tag them with lovelyowl. I can't wait to see what you create.